

**KS**  
**DESIGN**

STYLING



# STYLING

by Kirsten

For 31 days in the office, I took on a styling challenge where each day's outfit was based on a theme chosen by my coworkers at 4 p.m. the day before.

Using only items from my existing wardrobe, I had to creatively interpret each theme overnight and arrive the next morning with a fully realised look.

Each day, I documented the outfit with photos and posted them to my story, pairing them with themed music to match the vibe.

The challenge pushed me to think resourcefully, experiment with combinations I wouldn't normally consider, and showcase how versatile a thoughtfully curated wardrobe can be, all while bringing an element of fun and anticipation to the office each day.

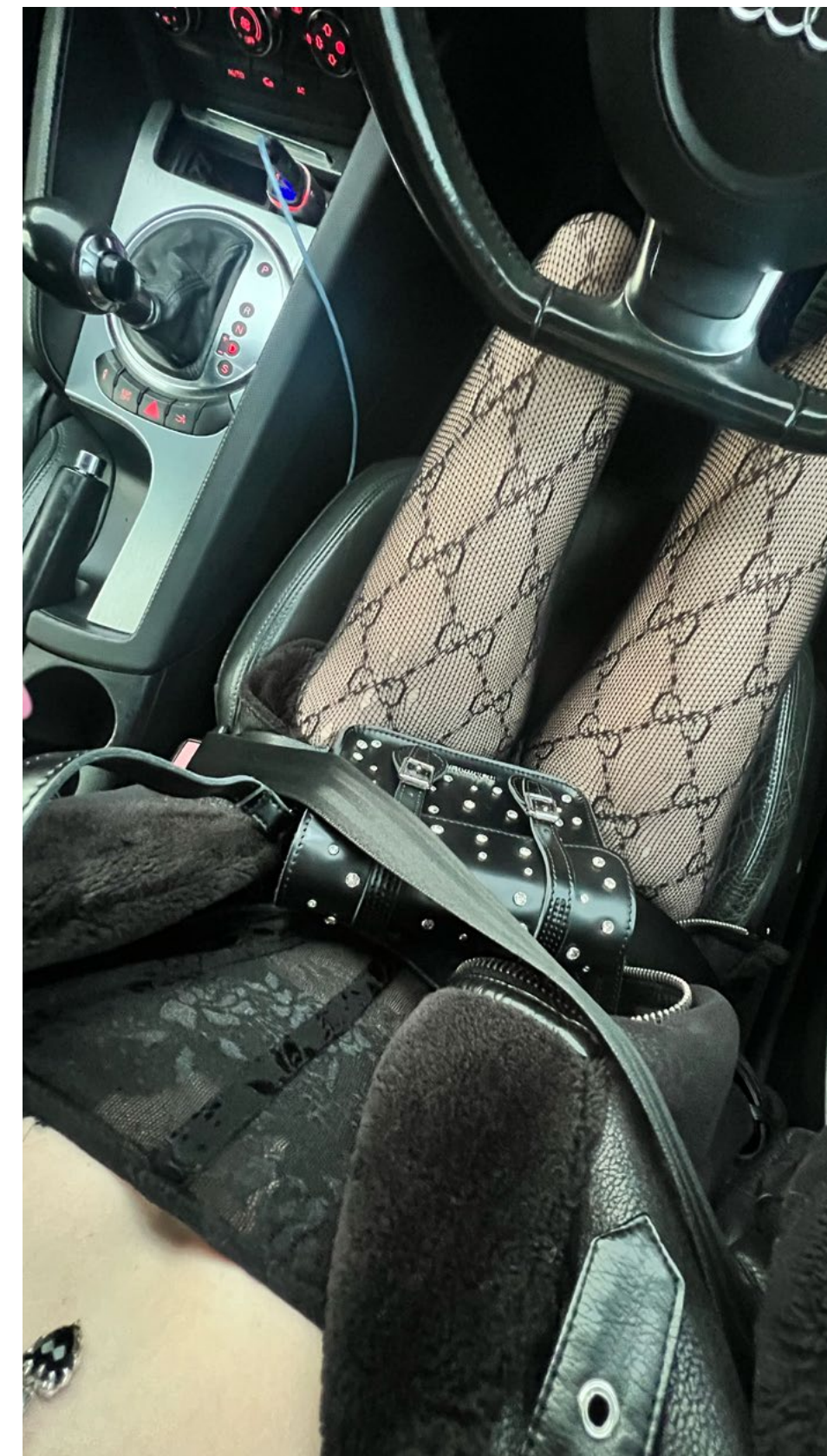
## HIGHLIGHT REEL



DAY 1: THE SECRETARY



DAY 2: KOREAN SCHOOL GIRL



DAY 3: EMO



DAY 4: CLASSY COWGIRL





DAY 5: BARBIE

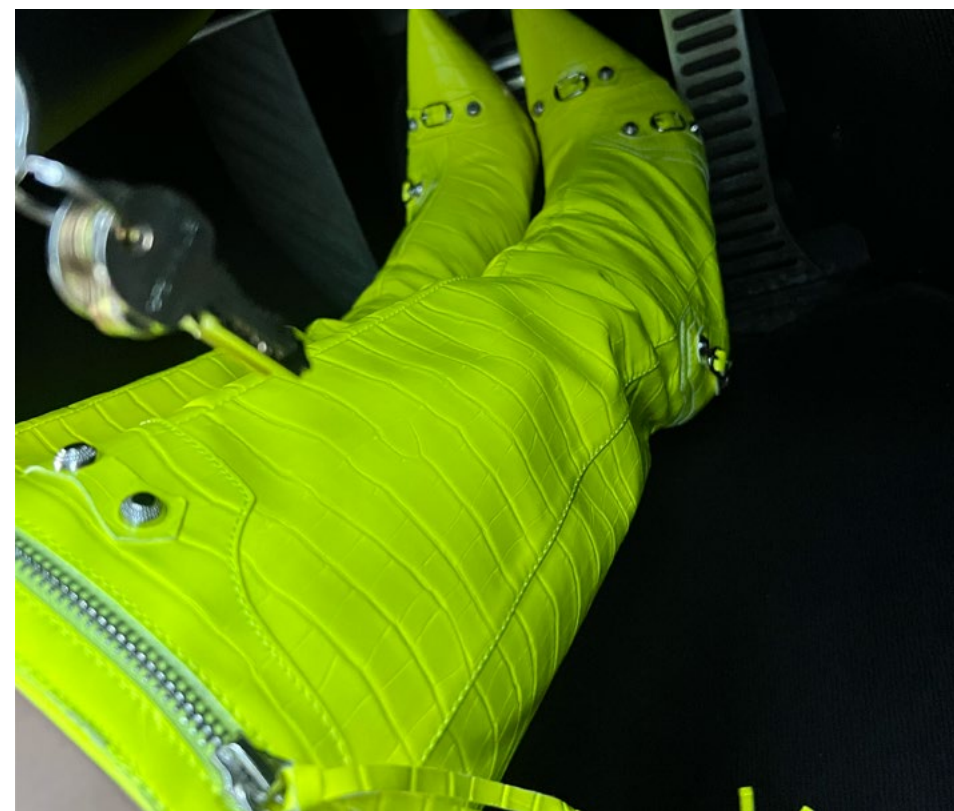
DAY 6: CHAV

DAY 7: KPOP STAR

DAY 8: HIPSTER/INDIE

DAY 9: ICE QUEEN





DAY 10: LAWYER

DAY 11: 90S Y2K

DAY 12: MEAN GIRLS

DAY 13: THE COTSWOLDS

DAY 14: MOB WIFE





**DAY 15: CLUELESS**

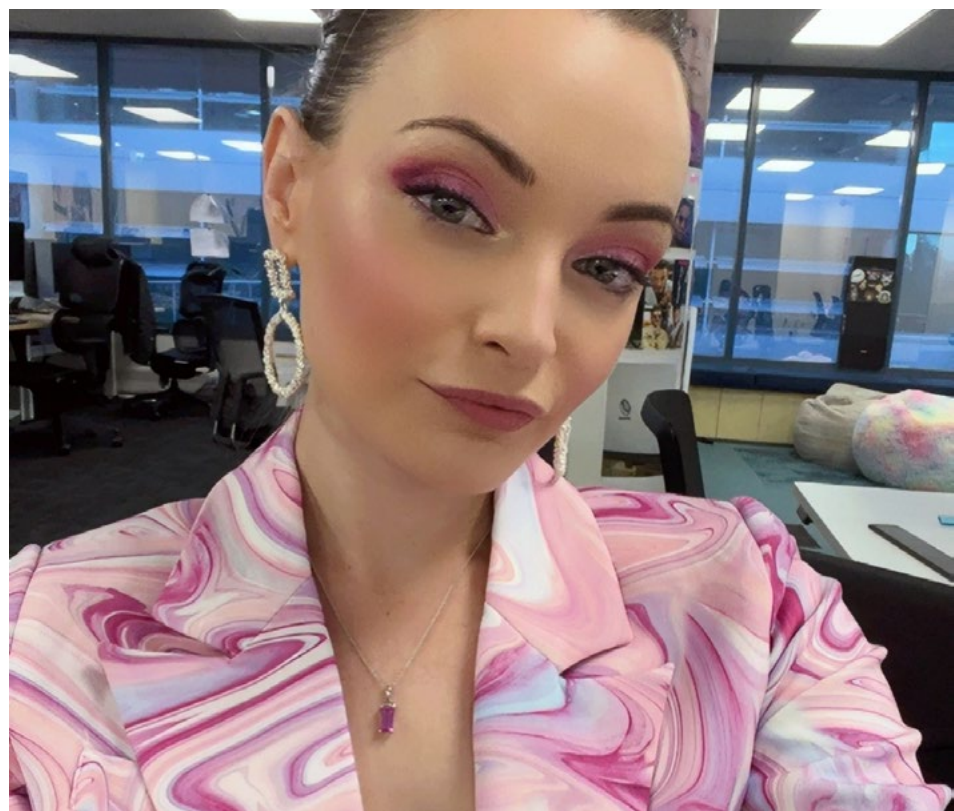
**DAY 16: OLD MONEY**

**DAY 17: BALLERINA**

**DAY 18: BRATZ DOLL**

**DAY 19: YALE STUDENT**





**DAY 20: ESPRESSO MARTINI**

**DAY 21: CHILLI MARG**

**DAY 22: APEROL SPRITZ**

**DAY 23: COSMO**

**DAY 24: COKE ZERO**





**DAY 25: CHANEL**

**DAY 26: CALVIN KLEIN**

**DAY 27: BURBERRY**

**DAY 28: PRADA**

**DAY 29: TIFFANY**





DAY 30: CANDY CANE



DAY 31: MRS GREY



DAY 31: FRENCH

